



With courtesy of IBA

- > **RELIABLE**
- > **SAFE**
- > **ACCURATE**
- > **EFFICIENT**

BizLink ORION

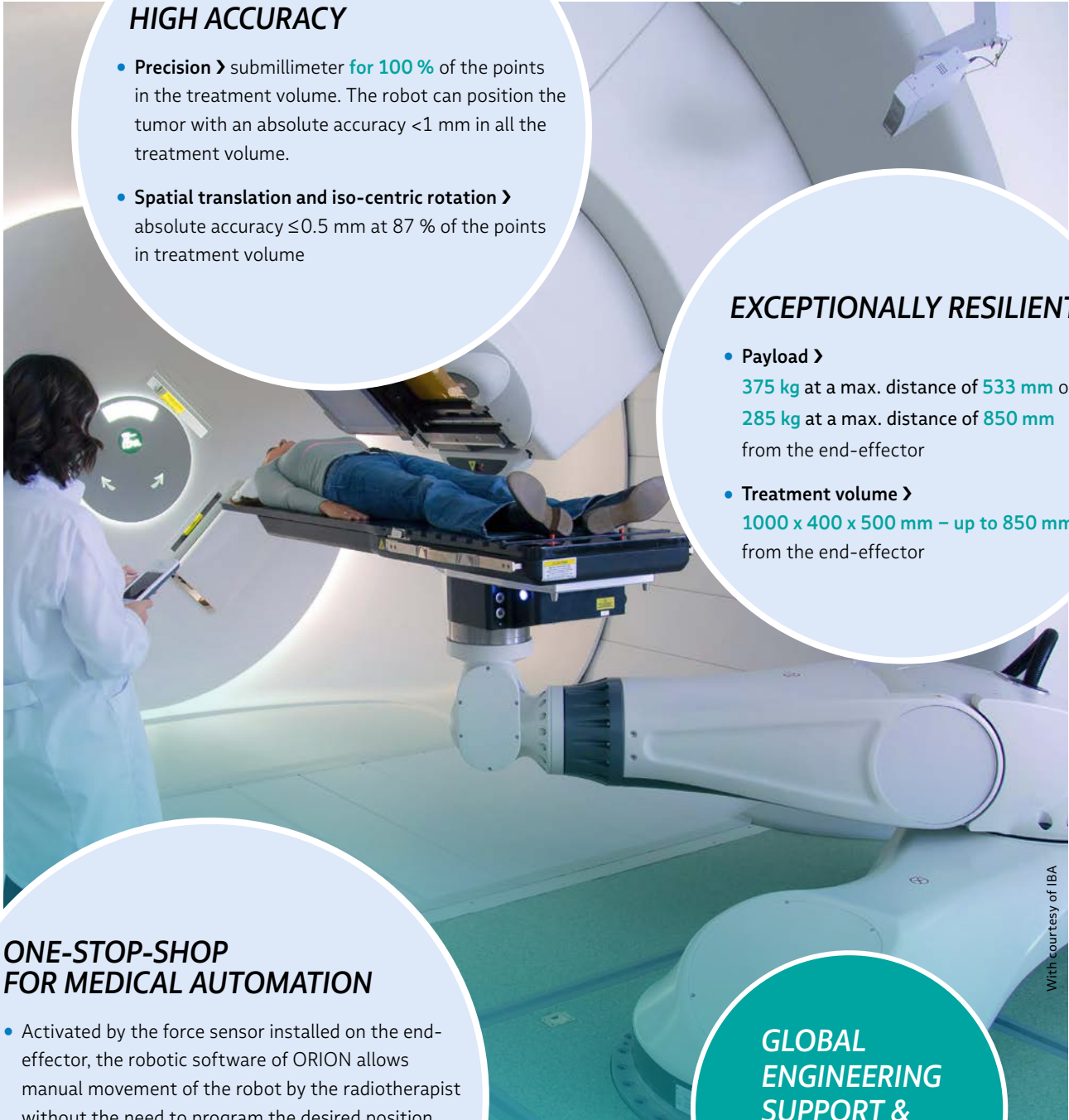
Precision patient positioning system

Our precision six degrees of freedom patient positioning system meets all the clinical expectations for efficient and comfortable patient set-up. It can be upgraded with smart options such as cobotics and coupling device for couch top.



Systems integration

- Medical **CE Mark** and **510(k)** certified
- ISO 13485:2016 and **FDA QSR** compliant
- Designed for **easy integration** into treatment systems
- Optional performance features



HIGH ACCURACY

- **Precision** > submillimeter **for 100 %** of the points in the treatment volume. The robot can position the tumor with an absolute accuracy <1 mm in all the treatment volume.
- **Spatial translation and iso-centric rotation** > absolute accuracy ≤ 0.5 mm at 87 % of the points in treatment volume

EXCEPTIONALLY RESILIENT

- **Payload** >
375 kg at a max. distance of **533 mm** or
285 kg at a max. distance of **850 mm**
from the end-effector
- **Treatment volume** >
1000 x 400 x 500 mm – up to **850 mm**
from the end-effector

ONE-STOP-SHOP FOR MEDICAL AUTOMATION

- Activated by the force sensor installed on the end-effector, the robotic software of ORION allows manual movement of the robot by the radiotherapist without the need to program the desired position
- The tool changer consists of a coupling system to easily change equipment (example: couch top, treatment chair or Quality Assurance tool) on the end-effector of the robot.

GLOBAL ENGINEERING SUPPORT & PARTNERING PHILOSOPHY

With courtesy of IBA